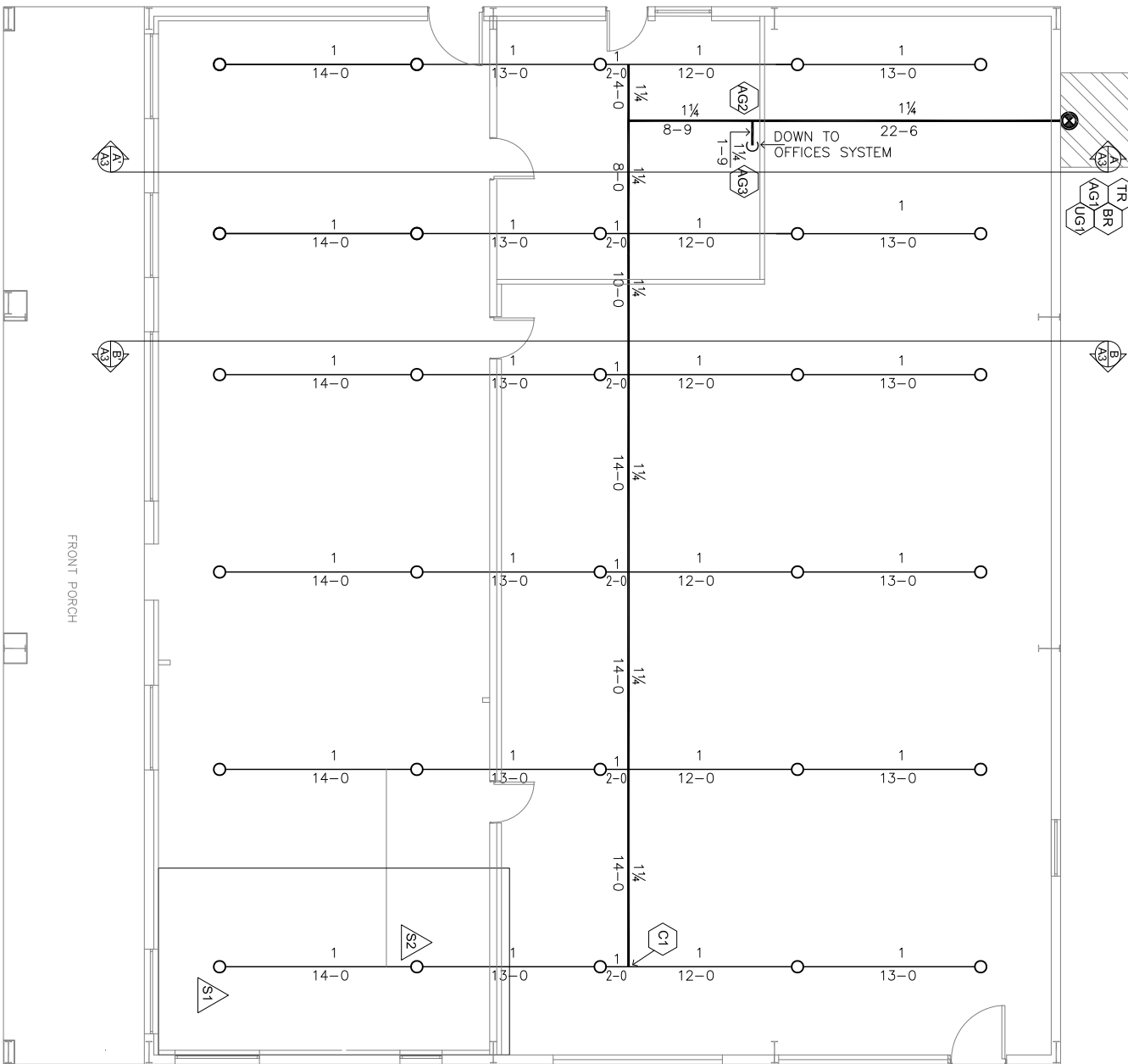


SYMBOL	MANUFACTURER	MODEL	SIN	TYPE	NPT	ORIFICE	K-FACTOR	TEMP	FINISH	ESCUICHEON	QUANTITY
⊗	VIKING	FREEDOM	VK494	RECESSED PENDENT	1/2"	-	K-4.9	155°F	WHITE	WHITE	019
○	VIKING	FREEDOM	VK467	UPRIGHT	1/2"	-	K-4.9	155°F	BRASS	-	034

TOTAL SPRINKLERS IN THIS PLAN 053

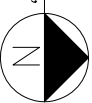
FIRE SPRINKLER LEGEND

FIRE PUMP EQUIPMENT
PUMP CAPACITY: 40 GPM @ 40 PSI

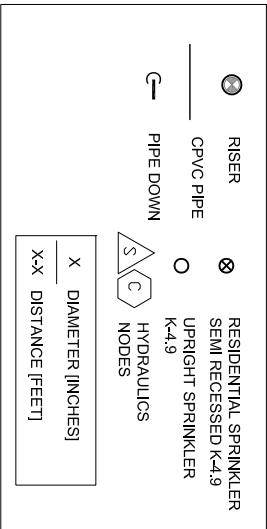


CEILING LEVEL

3/16" = 1'-0"



SYMBOLOLOGY



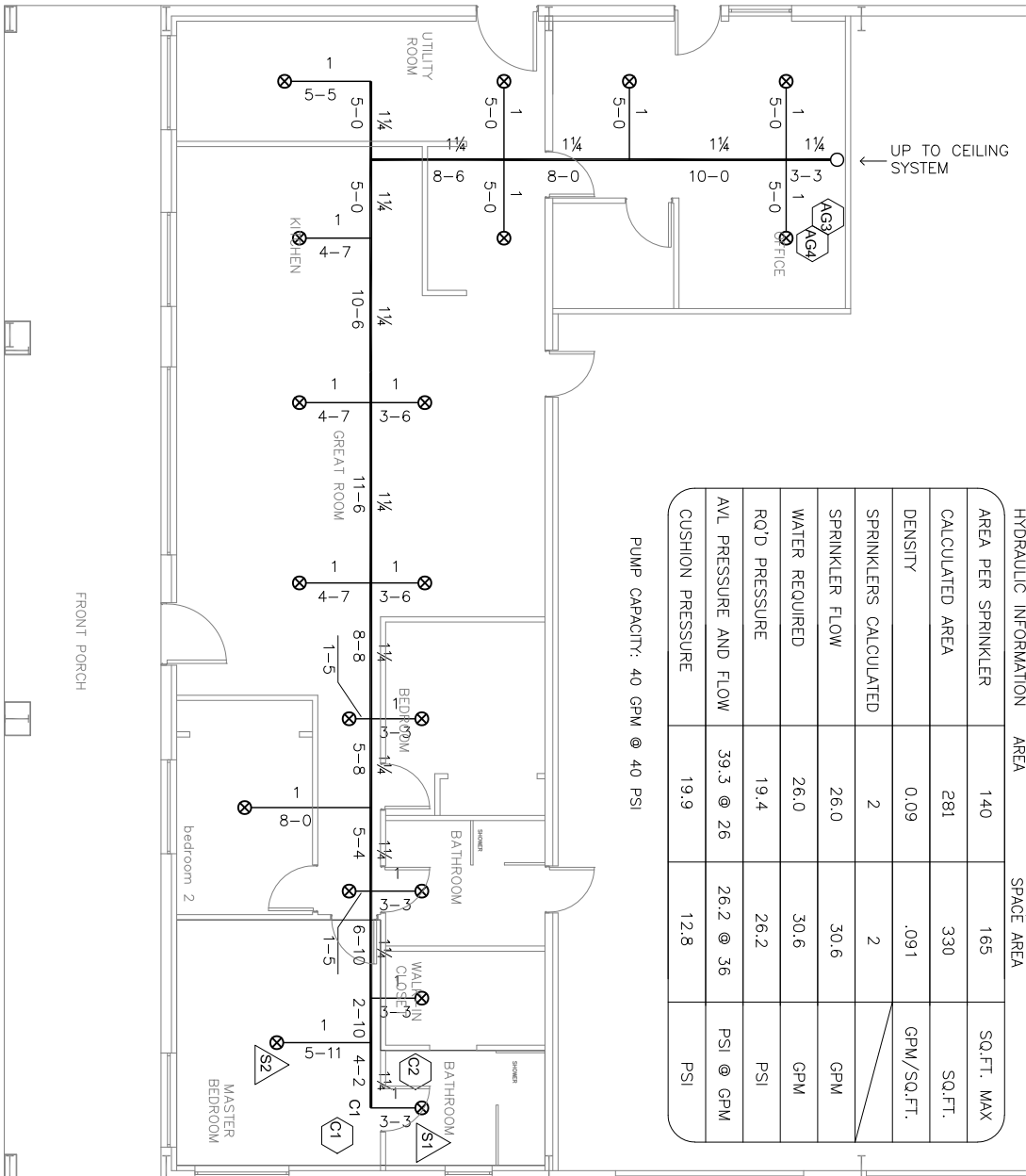
DESIGN CRITERIA FOR RESIDENCE AREA

PROVIDE A WET SYSTEM WITH A MINIMUM DENSITY OF 0.05 GPM/SQ.FT. IN THE TWO MOST HYDRAULIC REMOTE SPRINKLERS USING STANDARD RESPONSE SPRINKLERS 155°F TEMP 1/2" NPT. K-4.9 FACTOR RESIDENTIAL CONCEALED STYLE 14" SPACING MAXIMUM. 196 FT² MAXIMUM PER HEAD HEADS AREA TO BE LOCATED NO FURTHER THAN 8 FT FROM ANY WALL AND NO CLOSER THAN 8 FT BETWEEN SPRINKLERS. HYDRAULICALLY DESIGNED WITH TWO HEADS FLOWING.

- SPRINKLER SHALL NOT BE REQUIRED IN ATTICS, CONCEALED SPACES DEDICATED EXCLUSIVELY TO AND CONTAINING ONLY DWELLING UNIT VENTILATION EQUIPMENT, FLOOR/CEILING SPACES, CRAWL SPACES, AND OTHER CONCEALED SPACES THAT ARE NOT USED OR INTENDED FOR LIVING PURPOSES.
- SPRINKLER SHALL NOT BE REQUIRED IN BATHROOMS WHERE THE AREA IS LESS OR EQUAL OF 56 -SQ.FT.
- SPRINKLER SHALL NOT BE REQUIRED IN CLOTHES CLOSETS, LINEN CLOSETS AND PANTRIES THAT MEET ALL OF THE FOLLOWING CONDITIONS:
 - THE AREA OF THE SPACE DOES NOT EXCEED 24 FT²
 - THE WALLS AND CEILINGS ARE SURFACED WITH NONCOMBUSTIBLE OR LIMITED COMBUSTIBLE MATERIALS ACCORDING WITH NFPA 220.
- MECHANICAL CLOSETS SMALLER THAN 400FT², PENDENT, UPRIGHT AND SIDEWALL RESIDENTIAL SPRINKLER SHALL BE PERMITTED TO BE INSTALLED IN EITHER OF THE FOLLOWING SITUATIONS:
 - WITHIN 18 IN OF THE CEILING TO AVOID OBSTRUCTIONS NEAR THE CEILING WHERE THE COMPARTMENT IS ENCLOSED BY WALL AND A DOOR.
 - AT THE HIGHEST CEILING LEVEL WITHOUT REGARD TO OBSTRUCTIONS OR MINIMUM DISTANCES TO WALL.
- PENDENT SPRINKLERS NO CLOSER THAN 3 FEET OF THE CENTER OF A CEILING FAN.

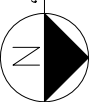
HYDRAULIC INFORMATION		RESIDENCE AREA	BARN/WORK SPACE AREA	
AREA PER SPRINKLER	140	165	SQ.FT. MAX	
CALCULATED AREA	281	330	SQ.FT.	
DENSITY	0.09	.091	GPM/SQ.FT.	
SPRINKLERS CALCULATED	2	2		
SPRINKLER FLOW	26.0	30.6	GPM	
WATER REQUIRED	26.0	30.6	GPM	
RQ'D PRESSURE	19.4	26.2	PSI	
AVL PRESSURE AND FLOW	39.3 @ 26	26.2 @ 36	PSI @ GPM	
CUSHION PRESSURE	19.9	12.8	PSI	

PUMP CAPACITY: 40 GPM @ 40 PSI



OFFICE LEVEL

3/16" = 1'-0"



PROJECT:
HETZEL
ADDRESS:
CITY:

CONTRACTOR INFORMATION

No	Date	Revisions

DESIGNER LOGO

Drawing Title
FIRE SPRINKLER
SYSTEMS

Permit No.

Drawn

Scale
INDICATED

Date

Sheet No.

FPS01